



How To Clear Your SOClass and JAVA Cache


Keemar King

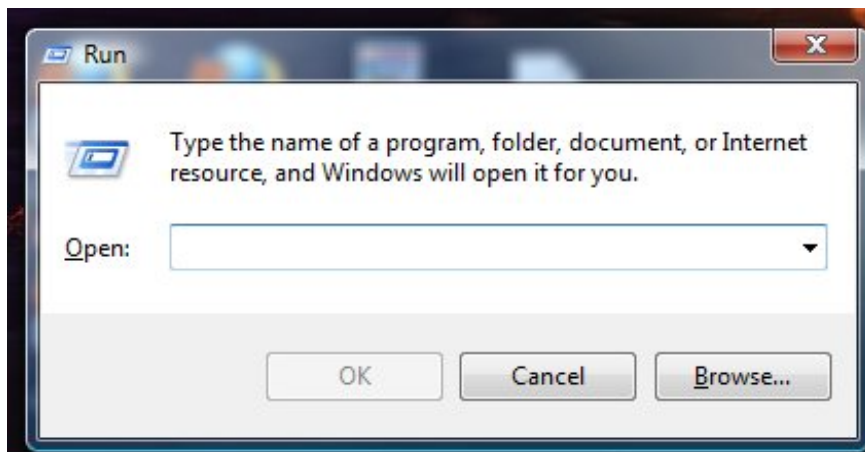
Rigel Michael Bowen

These steps need only be taken if experiencing problems launching ASYCUDAWorld, logging into ASYCUDAWorld, or performing functions within the ASYCUDAWorld application (such as viewing a declaration, waybill, etc.).

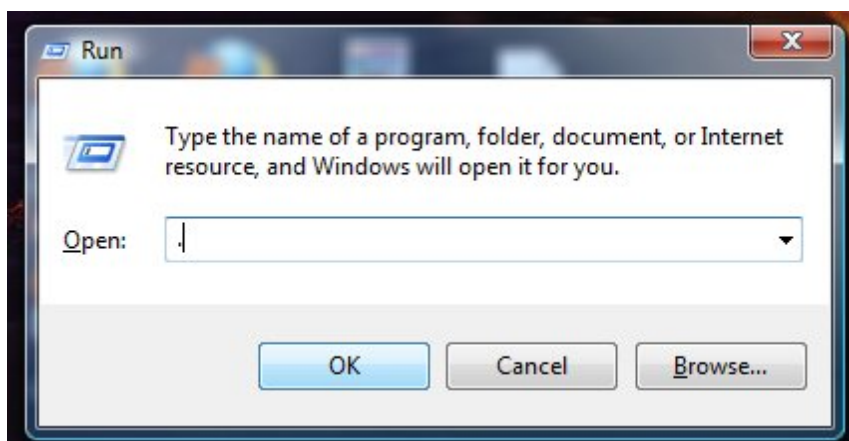
SOCLASS Cache



1. On your keyboard, hold the Windows key () and press the “R” key. This will open a “Run” window at the bottom left of your screen similar to the one shown below:



2. In this dialog window, enter a single full-stop (.) in the field next to the label “Open:” and click “OK” as shown below or simply press the “Enter” key:

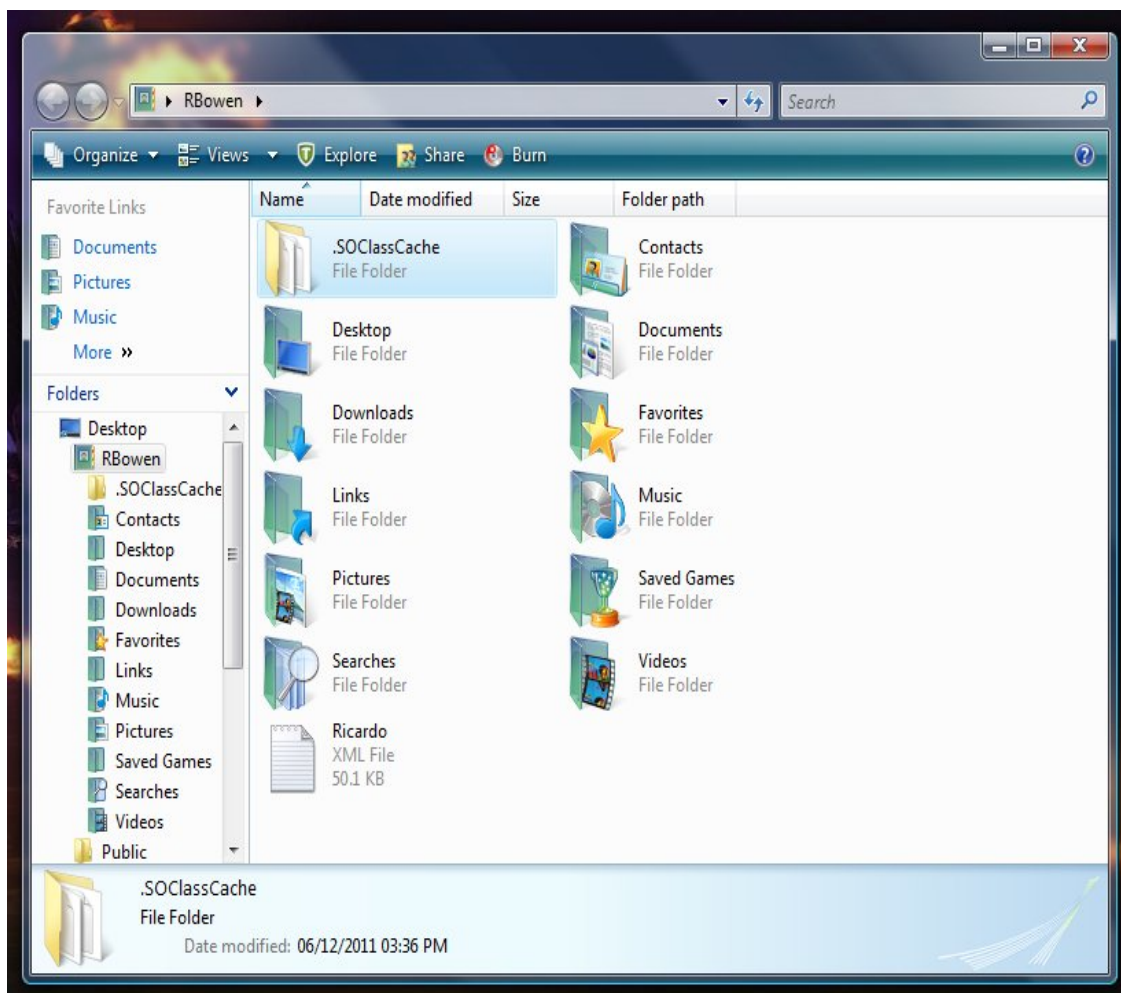


3. This will open an Explorer window similar to the one shown below:

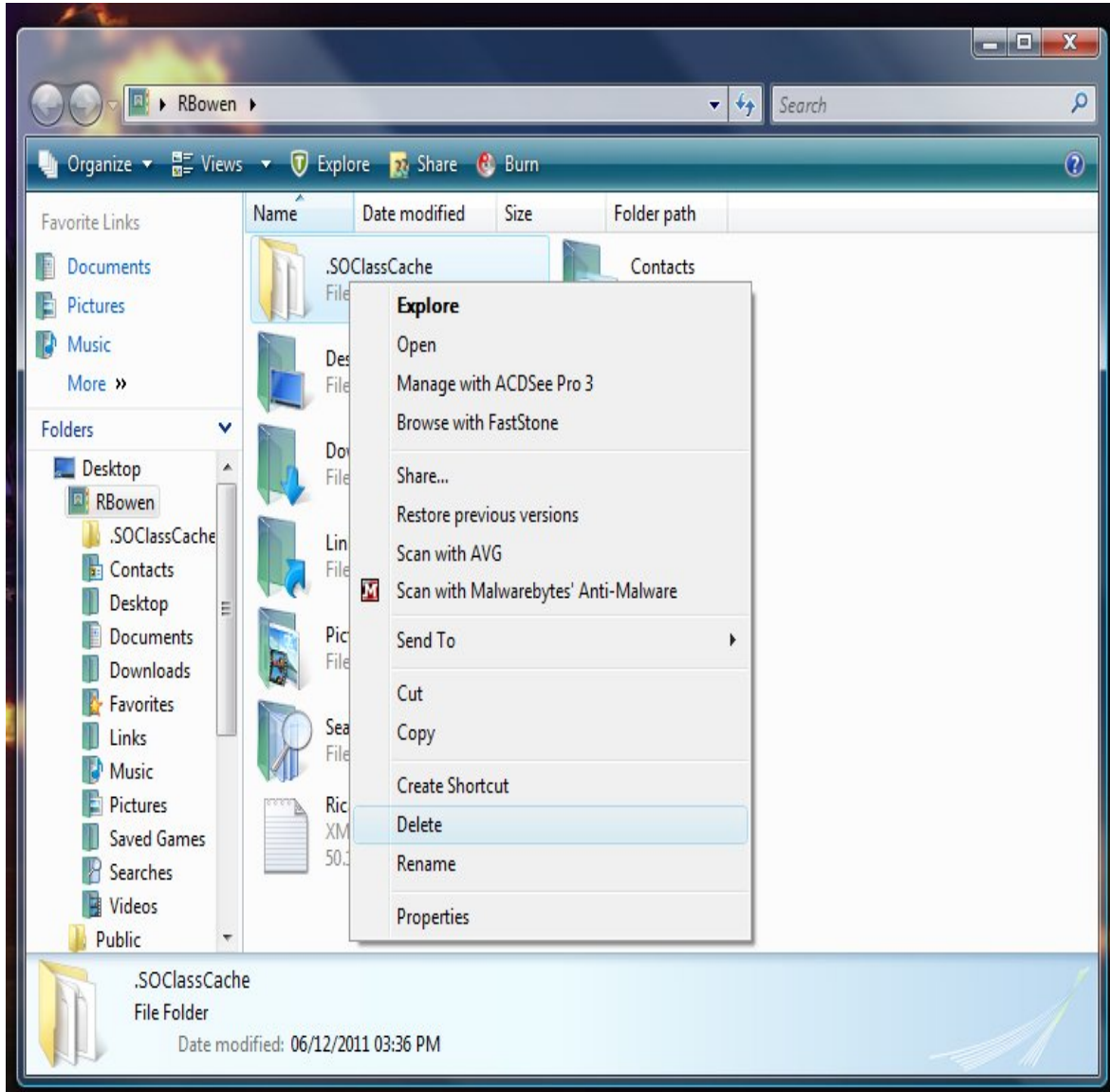


[CLEARING SOCLASS & JAVA CACHE]

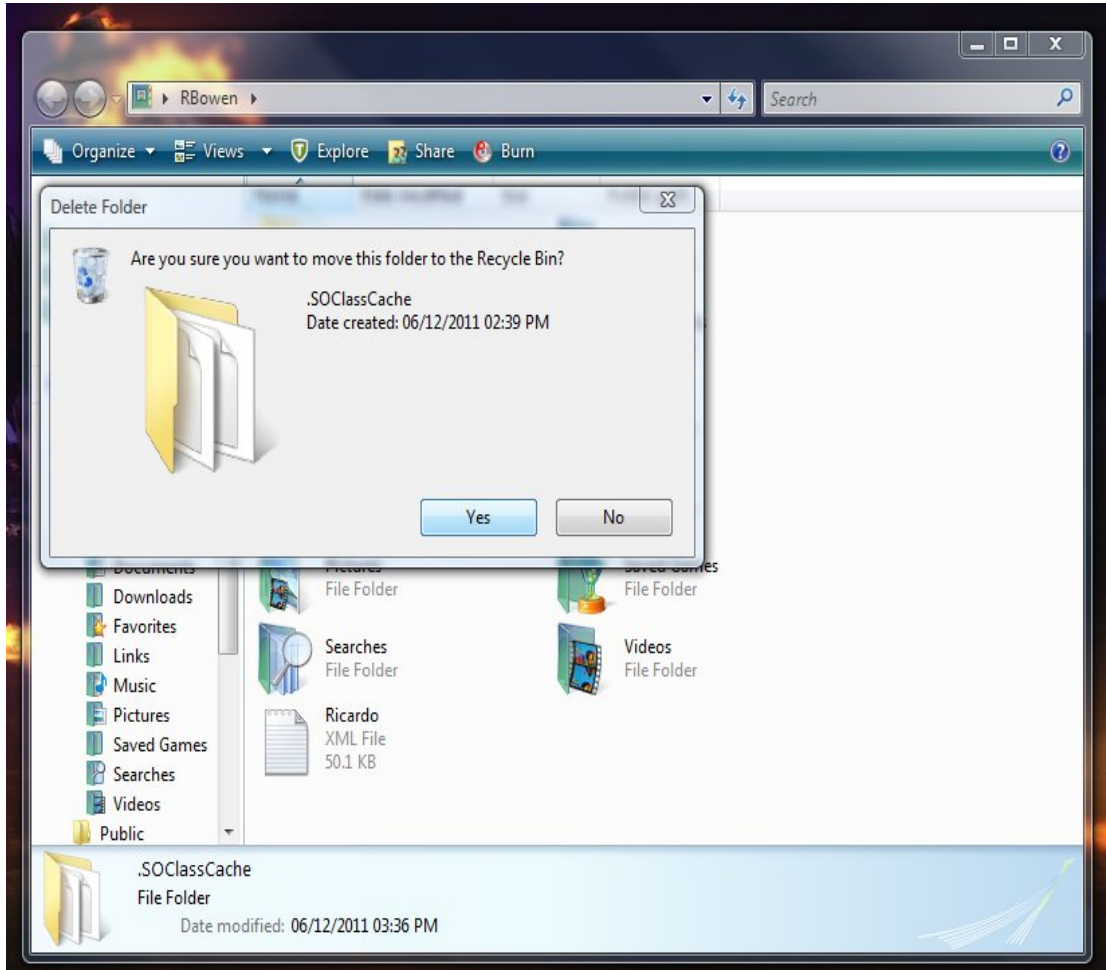
December 1, 2011



4. In this window, right-click on the folder titled: “SOClassCache” and select the “Delete” option as shown below.

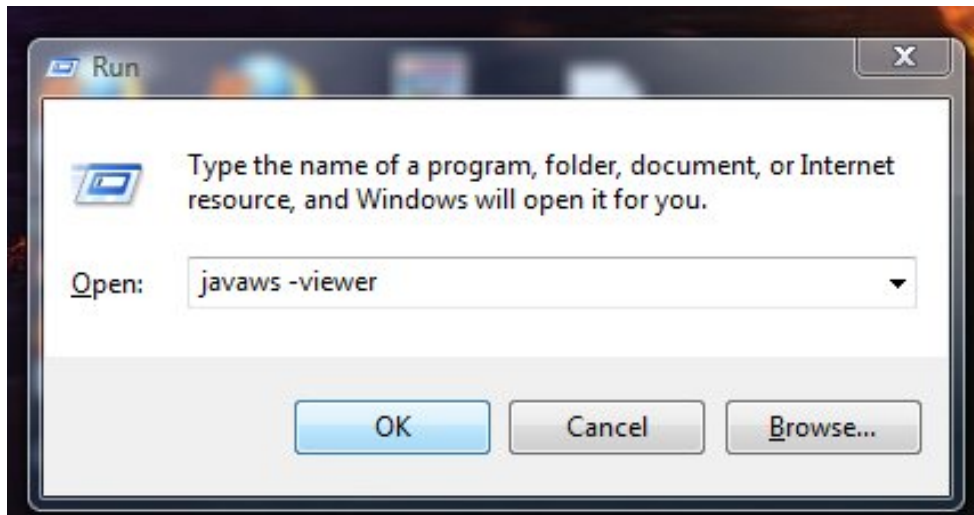


5. A message window will appear over this Explorer Window asking if you are sure that you want to move the SOClassCache folder to the Recycle Bin as shown below. Click on “Yes” to completely delete the SOClassCache folder.

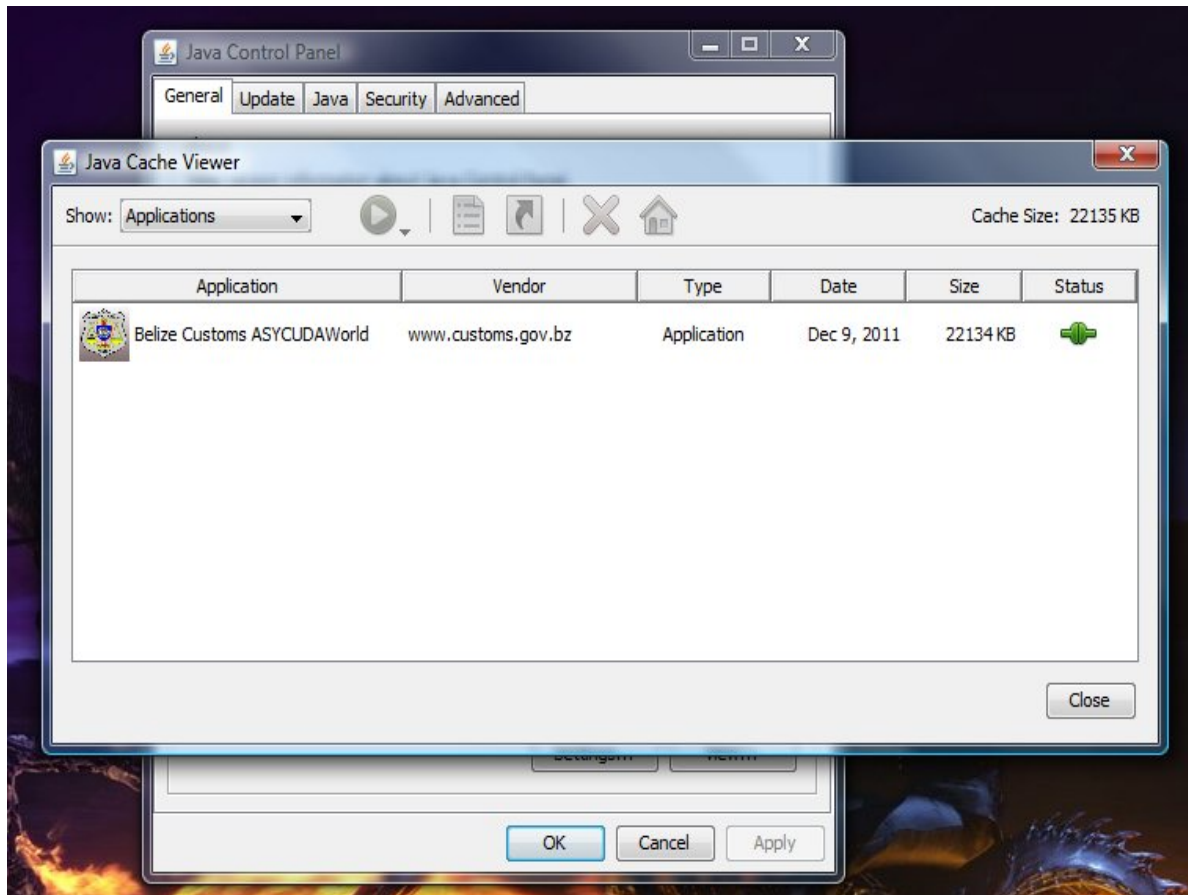


JAVA Cache

1. Complete step 1 as was described above in the previous section to get the “Run” window.
2. In the “Run” window, type: “javaws –viewer” as shown below and click on the “OK” key or simply hit the “Enter” key.



3. In the next sequence, two windows will open one on top of the other similar to those shown below. On the bottom is the window titled “Java Control Panel”, and the one on the top which is active is labelled “Java Cache Viewer”. As shown below, the Java Cache Viewer window contains a row that has the details of a java application called “Belize Customs ASYCUDAWorld”. There may also be an application with the name “SOClass.jnlp” or “BZ.jnlp”, or there may be more than one row of these applications.

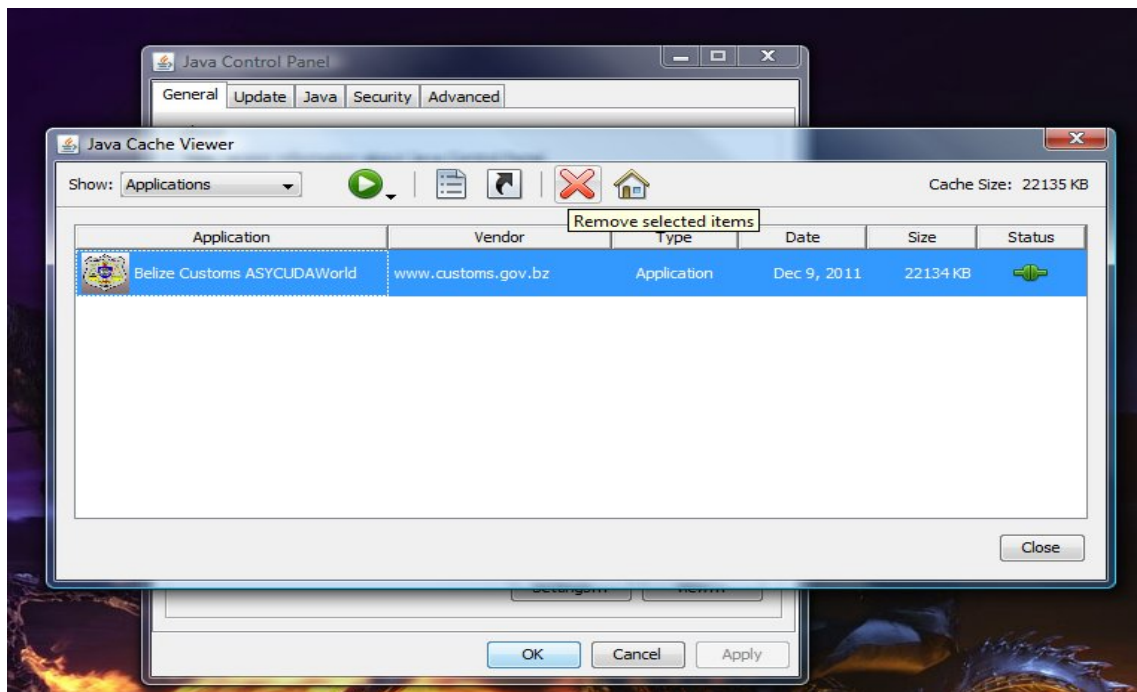


4. Highlight the row by left-clicking (regular click). If there are more than one rows, highlight all of them by first highlighting the top row, then holding down the "Ctrl" key and pressing the "A" key. Highlighting the row(s) will activate the icons in the toolbar above as shown below. One of these icons is the delete icon that looks like a red "X". Delete the row(s) by clicking on this "Delete" icon.

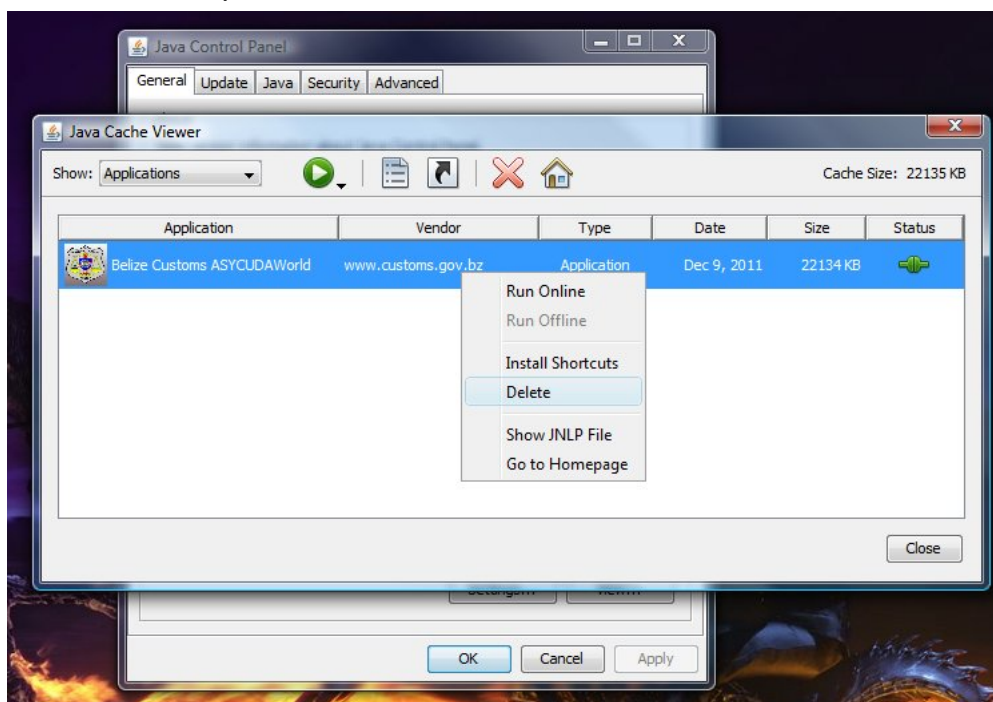


[CLEARING SOCLASS & JAVA CACHE]

December 1, 2011



5. Another method to delete the row(s) is to right-click on the highlighted row and choose the "Delete" Option as shown below.





6. After deleting the row(s), simply click on the “Close button on the bottom-right of the Java Cache Viewer window, and click on the “OK” button on the Java Control Panel window.

7. Log back in to ASYCUDAWorld as per normal and the server will download the freshest version of the client-side files to your pc and functionality will be restored for your use of the application.